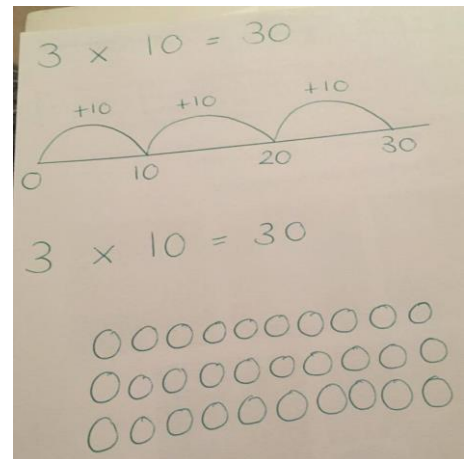


Please complete the maths sheet.

This week in Poplar Class we have been:

- Making poppies, writing Remembrance Day poetry and learning about why we commemorate Remembrance Day
- Exploring our outdoor area to find micro-habitats and finding out which animals live in certain types of habitats and why they are suited to these habitats
- Learning about different types of animals (fish, mammals, amphibians, reptiles, birds) and why they fit into their category
- Inventing a monster – we will use this character to write our own fantasy stories
- Composing and performing music in groups using musical instruments
- Year 2 are continuing to learn common contracted words
- Year 1 have been learning the phase 3 sounds ch, sh, th, ng (group 1) and phase 5 sounds oy, ir, ue, aw in phonics (group 2)
- Continuing to learn the songs and their dance moves for our nativity
- Discussing our Christian value of 'peace' and how we relax/be peaceful. We all joined in with a relaxing activity (cosmic kids– calm videos) and some of us were so relaxed we fell asleep! ☺
- In Maths, Year 1 have been learning to subtract up to 20; using real-life examples, objects and word problems
- In Maths, Year 2 have been continuing to learn to multiply in 10s, 5s, 2s and 3s and have been solving calculations by drawing an array or a number line (see picture for an example). We have been solving word problems and learning that multiplication is commutative (can be done in any order) e.g. $6 \times 5 =$ and $5 \times 6 =$ gives you the same answer



To support your child at home you could:

- You have a copy of the phase 3 and 5 phonic sounds and tricky words (word that cannot be sounded out to read) in your child's book bag. The tricky words are also on bookmarks. Please use these to support daily reading at home. **Thank you for all of your support with listening to your child read at home – this is making a huge difference to their progress and love of reading.** ☺
- Learn lines for the nativity
- Find out more about different types of animals (fish, mammals, amphibians, reptiles, birds) and why they fit into their category

Useful dates

Watermill Theatre – Wednesday 29th November

Oak and Poplar Nativity – Tuesday 5th December

Stay and Play – Thursday 14th December

Please keep checking our 'Poplar class' page on the website for photos/ updates of what we have been learning about! <http://www.st-blaise.oxon.sch.uk/category/poplar/>